



PORTFOLIO

RESIDENTIAL

TABLE OF CONTENT

- SHARED SUCCESS // 02
- COMPANY OVERVIEW // 03
 - COMMUNITY // 03
 - ENVIRONMENT // 03
- RESIDENTIAL // 04
 - BANKSIA NEWQUAY // 05
 - HOLME APARTMENTS // 07
 - ARDEN GARDENS // 08
 - SKY ONE // 09
 - URBANEST STUDENT ACCOMMODATION // 10
 - YARRA HOUSE // 11
 - ATRIA APARTMENTS // 12
 - IKEBANA // 13
 - NEW QUAY PROMENADE DOCKLANDS // 14
 - PARQUE APARTMENTS // 15
 - TIP TOP APARTMENTS // 16
 - ONLY FLEMINGTON // 17
 - MIXED USE COLLINGWOOD // 18
 - ISTANA APARTMENTS // 19
 - LEICESTER ST. STUDENT ACCOMMODATION // 19

COMPANY OVERVIEW

ASI Electrics has been leading the way in large-scale, complex project delivery thanks to our depth of experience and our committed ‘make it happen’ attitude.

Blue chip clients in health and education, retail, commercial and residential sectors rely on us to provide specialist teams to meet their needs. At ASI we provide a range of services including electrical design, turn key electrical installations, electrical refrigeration, engineering and value enhanced solutions to provide an all-encompassing outcome for our clients.

We assemble the right teams and develop collaborative relationships to ensure that every project we participate in is delivered safely, on time, on budget and to the very highest standards.

Our reputation is built on our ability to ‘make it happen’, and our record of success attests to our commitment to exceeding our clients’ expectations and the repeat work that results from this.



SHARED SUCCESS

At ASI Electrics we strive for Shared Success. This is achieved by developing high performing teams that are aligned to our vision and values.

Shared success is dependent upon strong professional relationships and having genuine conversations.

We know that if we succeed, then all our valued clients and partners also succeed. This integrated approach begins with our people and the belief that together we can develop trusting relationships with all stakeholders to achieve long term mutual goals.

COMMUNITY

ASI Electrics is a responsible business, and that means we are responsible for all our actions – socially, ethically and environmentally.

As well as providing local employment, we support a range of ongoing initiatives that help create healthy, vibrant and cohesive communities.

We believe the best way that ASI Electrics can make a broad and meaningful contribution to the communities in which we operate is through engagement. We do this in a number of ways, such as: charity events, corporate friendships, charity partnerships, volunteering and donating.

We see ourselves as part of the communities in which we operate, and as such we strive to be positive, active and contributing participants in community life.

ENVIRONMENT

At ASI Electrics we all take the time to understand the importance of managing the environments in which we operate.

ASI Electrics has notable experience in operating within stringent quarantine regulations, and in managing environmental guidelines such as nature reserves.

We are highly sensitive to the overriding need to consider and protect our natural environments, so that we can preserve the land for future generations to enjoy.



RESIDENTIAL

BANKSIA NEWQUAY

PROJECT DETAILS

Builder:	Hickory Group
Value:	\$2.8 Million
Completed:	2016

Spectacular views on all fronts. Banksia NewQuay captures sweeping views of the Harbour and the city. Careful craftsmanship throughout the entire building with glazed windows designed to maximize views and solar comfort, while still ensuring privacy. Inspired by the Australian landscape, these generous living spaces are richly woven with Australian timbers such as Victorian Ash and Spotted Gum.

Along with the building comes a lush and tranquil parkland designed as an extension to your home. Live luxuriously in your own oasis.

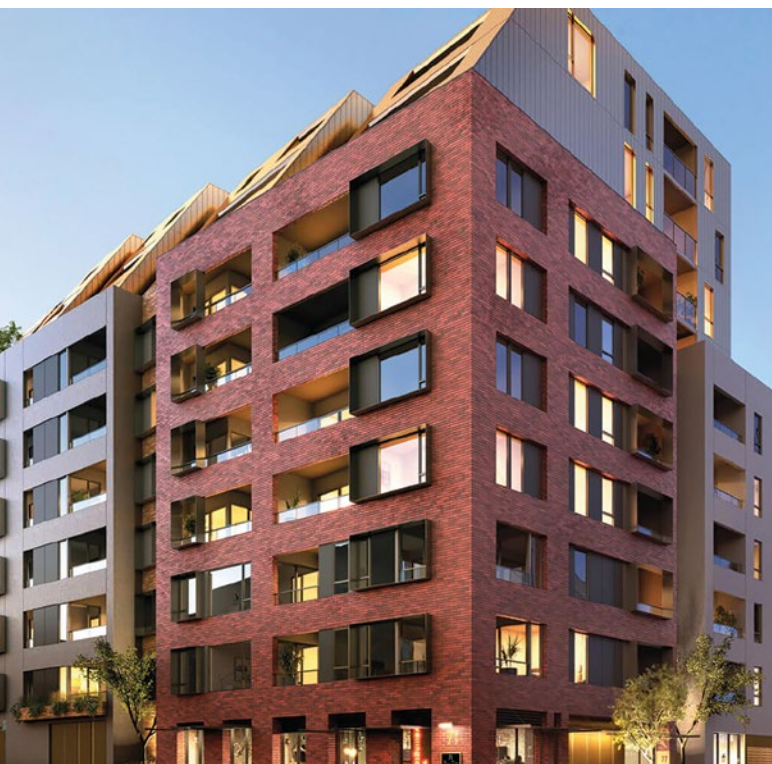


BANKSIA NEWQUAY



“We are committed to delivering innovative and sustainable infrastructure solutions.”

Geoff Gray - Construcion Manager ASI Electrics



HOLME APARTMENTS

PROJECT DETAILS

Builder:	Hacer Group
Value:	\$3.0 Million
Start Date:	2017

The newest apartment project of Cbus Property was inspired by the residential and industrial essence of Collingwood, which is why its architecture combines elements of brick, tiles and metal to incorporate the industrial tone and heritage of the location itself. Holme represents a place of sanctuary and exemplary living.

Featuring one, two, and three bedroom apartments and penthouses, the 12-level building comes with a total of 154 apartments. This also includes retail spaces on the ground floor. All entry points are fitted with cutting-edge technology, which provides tenants with easy access into the building, and at the same time, adds that extra level of security. The combination of high quality materials, high-end technology and wonderful views all make for an outstanding and luxurious residential building.





ARDEN GARDENS

PROJECT DETAILS

Builder:	Hickory Group
Value:	\$6.0 Million
Start Date:	March 2017

Located in the stylish strip of North Melbourne, this landmark development of apartments boasts a beautiful view of the city and offers a mix of one to four bedroom apartments. As its namesake suggests, Arden Gardens comes with a beautiful landscaped garden. It also has a lounge room, cinema, and cardio area. Arden Gardens even has its own retail precinct with a brand new Woolworths branch to boot. With over 300 apartments in two buildings, the development will include a multi-level carpark to accommodate its residents.

Arden is expected to be a global commercial precinct, which is why the building features a sleek architectural design and impeccable construction.





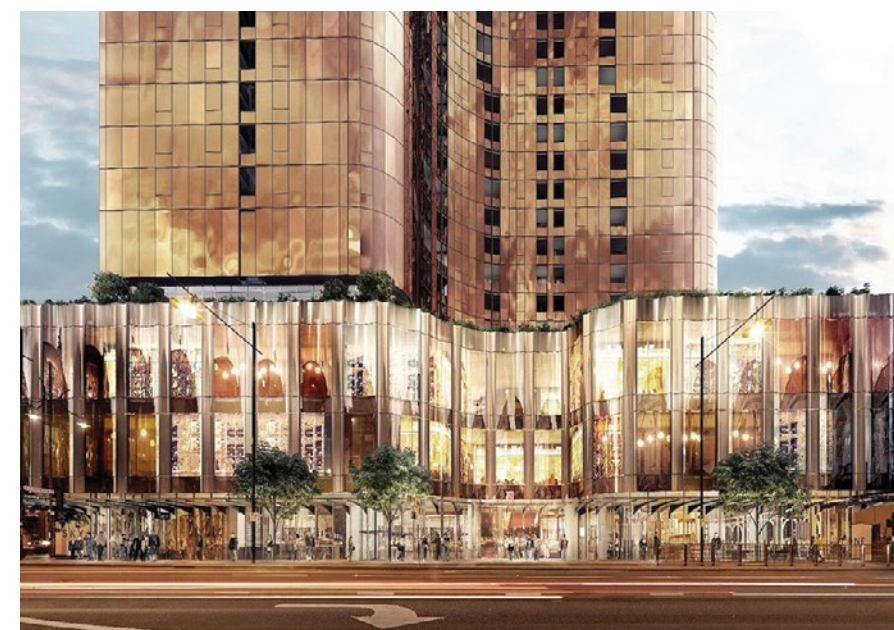
SKY ONE

PROJECT DETAILS

Builder:	Hickory Group
Value:	\$6.0 Million
Start Date:	August 2017

Sky One is strategically situated in the heart of Box Hill, one of Melbourne's most exciting suburbs. Its architectural design screams luxury living with its sleek and iconic curved design. The development project offers three levels of premium retail and dining experience for both residents and non-residents. Aside from that, Sky One is equipped with a gymnasium, swimming pool, lounge, yoga studio, entertainment room, lounge, private dining area, and private cinema.

At 36 stories high, Sky One will have 400 apartments and a multi-level basement. All the residential areas will have clean lines and quality finishes, which follow the theme of sky high elegance.





URBANEST STUDENT ACCOMMODATION

PROJECT DETAILS

Builder:	Icon Co.
Value:	\$3.3 Million
Start Date:	October 2017

Like all Urbanest properties, this new student accommodation building provides students with modern rooms, study areas, and social spaces. This project offers accommodation for up to 275 students, all in one building.





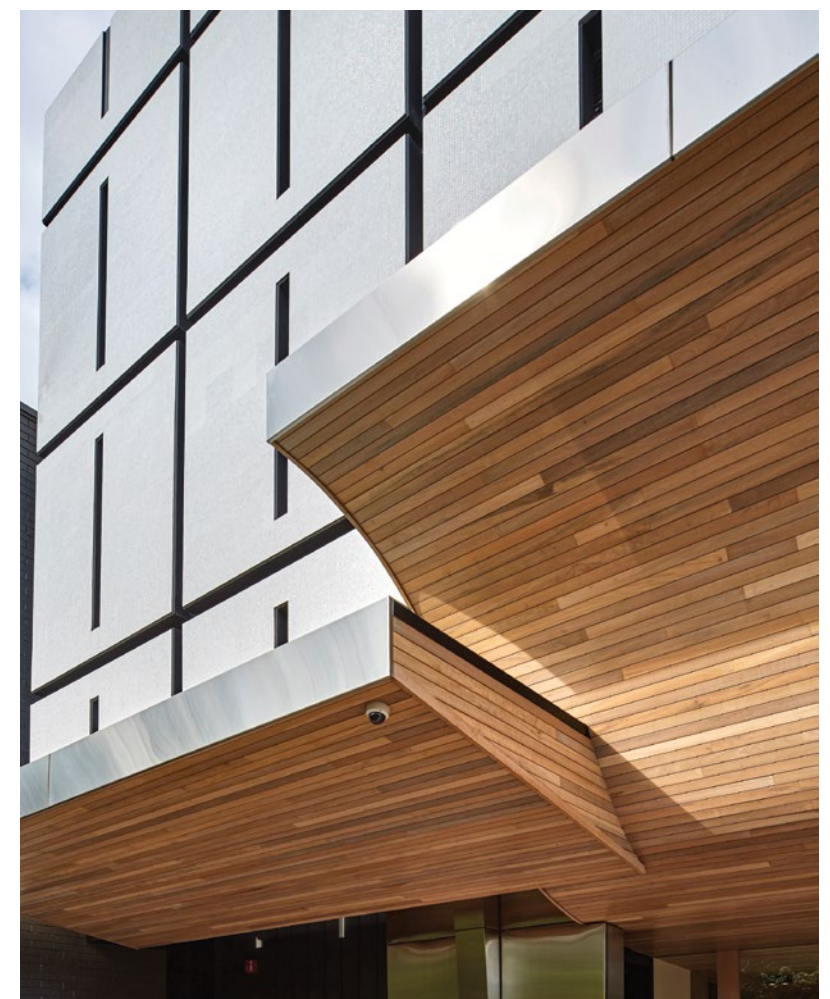
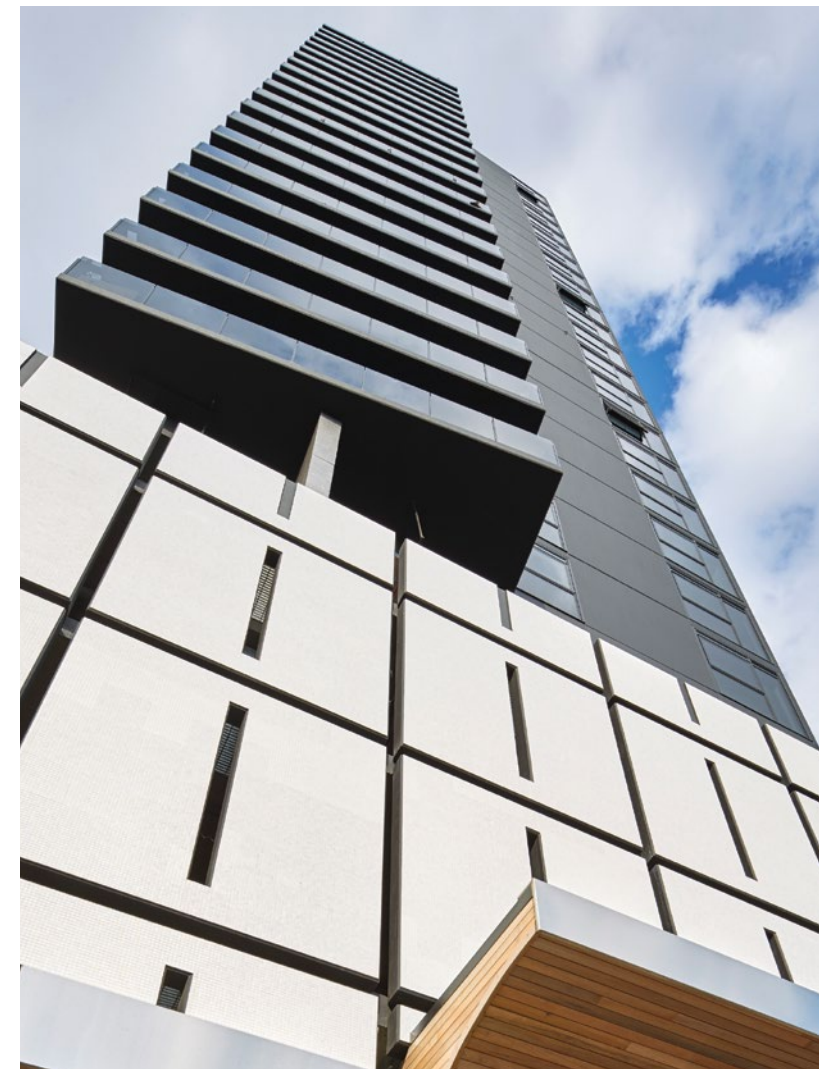
YARRA HOUSE

PROJECT DETAILS

Builder:	Icon Co
Value:	\$2.3 Million
Completed:	2015

Yarra House is the epitome of a luxury penthouse. Residents may spend hours simply sitting in the living room as they look through the floor-to-ceiling glass windows overlooking the cityscape of skyscrapers and evergreen parks and gardens.

The designer and mastermind of Yarra House – Michael Yates – has ensured that the building offers deluxe amenities, such as a state of the art gym, a generously stocked library, a workspace or business center, and even an infinity pool available on the rooftop.





ATRIA APARTMENTS

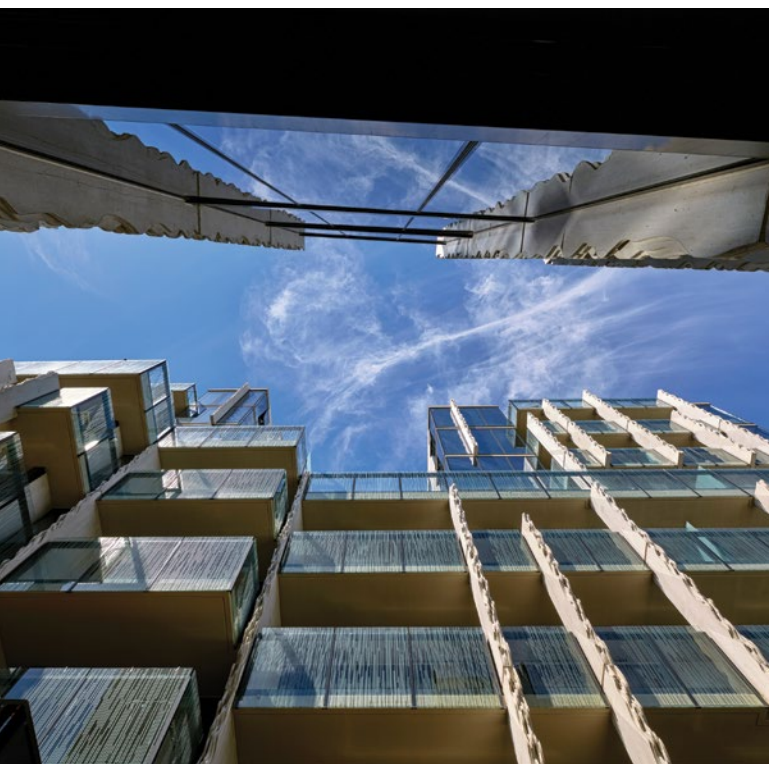
PROJECT DETAILS

Builder:	Probuild Construction
Value:	\$4.2 Million
Completed:	2016

Located in a heritage-rich and vibrant suburb, its overall design is the perfect blend of modern living and suburban charm. With 5 levels and 50 apartments on each floor, ASI ensured the completion of all electrical installation by working across multiple areas concurrently.

Despite being a labour-intensive electrical project, all milestones were successfully delivered.





IKEBANA WEST MELBOURNE

PROJECT DETAILS

Builder:	Hamilton Marino
Value:	\$3 Million
Completed:	2016

As its name suggests, Ikebana is a Japanese-inspired luxury development in West Melbourne. With residents looking to live in quieter areas than the CBD, West Melbourne has become a highly attractive alternative. With its wide tree-lined streets and low-rise buildings, this area has a wonderful suburban feel.

This project is comprised of three buildings with a total of 248 apartments. Ikebana in Japanese translates to the Japanese art of flower arrangement, which is why the building celebrates artisanal details such as its torn paper façade and delicate screening. The building also features a lush rooftop with a Private Club, teppanyaki grill, karaoke lounge, indoor/outdoor lounge, firepit, and private dining areas. In addition, Ikebana also has two VIP Spa Retreats that can be booked at no cost by the residents for their own private entertaining. This includes a spa, barbecue, bar, and moonlight cinema.

All these make for one opulent lifestyle.





NEW QUAY PROMENADE DOCKLANDS

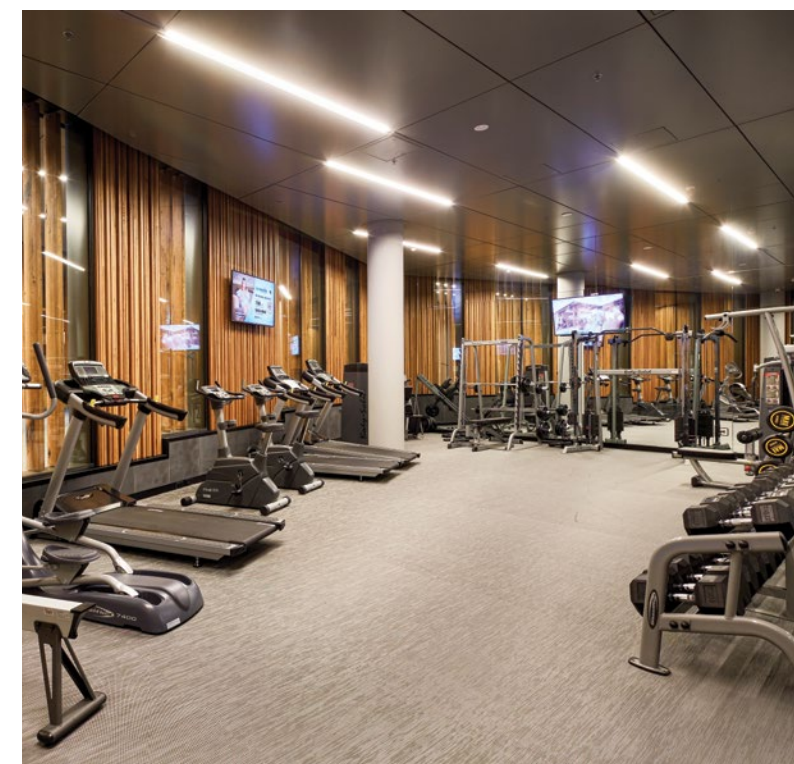
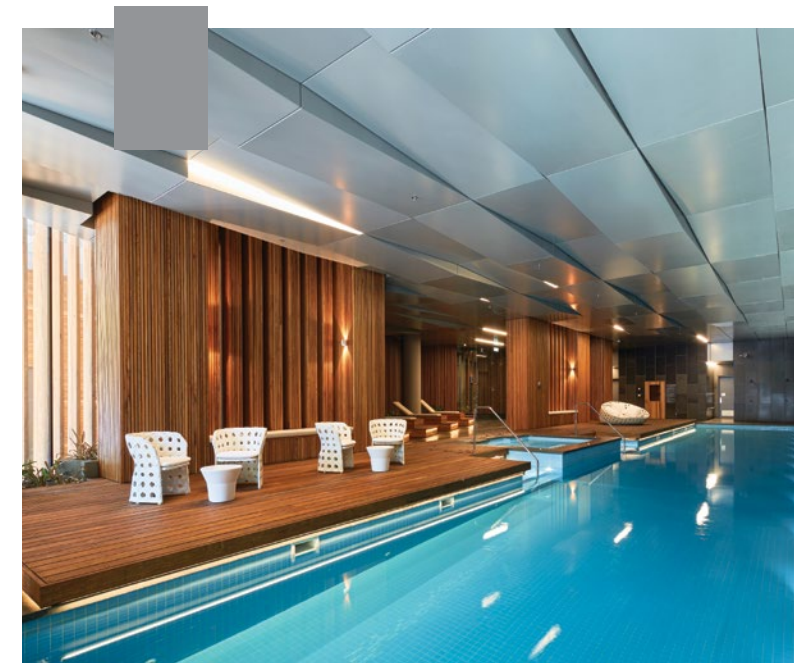
PROJECT DETAILS

Builder:	Hickory Group
Value:	\$4.2 Million
Completed:	2016

New Quay is a hub of activity with its numerous entertainment and sightseeing opportunities. Consequently, New Quay Promenade's location is a major selling point already as residents can stroll along the Promenade, shop at Harbour Town, and easily get to the CBD.

Offering spacious homes, New Quay Promenade Docklands has other impressive features such as a 25m indoor heated pool, sauna, gym, outdoor garden, barbecue facilities, entertainer's balcony with views over a beautiful garden, and most importantly, high level building security.

A grand home that has everything you need, all in one area.





PARQUE APARTMENTS

PROJECT DETAILS

Builder:	Hickory Group
Value:	\$4.2 Million
Completed:	2016

This upmarket residential development features spectacular resident amenities and distant views. Taking luxury living to all new heights, Parque Apartments is comprised of two glass towers that are connected through a private outdoor area on the 8th level. Its amenities include a library, 25-metre infinity pool, function room, outdoor terraces, and a private dining room and kitchen with sweeping views of Melbourne.

The building offers two to three bedroom apartments with jaw-dropping features like lift access to your own front door, exceptional safety features, extensive garden and outdoor areas, and two full-size bathrooms. The building design has an old world charm that sets a new standard for lavish inner-city living.

With carefully structured quality materials and meticulous construction, Parque Apartments is a stunning complex that provides its residents a new sense of home.





TIP TOP APARTMENTS

PROJECT DETAILS

Builder:	ICON Construction
Value:	\$5.9 Million
Completed:	2015

Recognized as among the top residential developments in Australia, Tip Top apartments is a unique mix of one and two bedroom apartments and luxury townhouses across six buildings. The architecture alone stands out with six of the buildings inspired by the location's bakery heritage.

For this reason, coordination was fundamental to the project's success. This involved organising energisation and embedded metering to separate dwellings, designing switch boards, and coordinating with both in-house and on-site labour. The ASI team worked seamlessly to deliver a premium finish across all aspects of the electrical installation.



ONLY FLEMINGTON

PROJECT DETAILS

Builder:	Icon Co
Value:	\$4.8 Million
Completed:	2016

A residential development that exemplifies connectivity and convenience. Its location makes it easy to reach universities, hospitals, tram stations, and major road networks, thereby giving its residents a level of accessibility that is unparalleled.

This complex consists of three towers between 8, 12, and 18 stories high with its own shopping mall on the first floor, a care centre on the second floor, and a rooftop swimming pool. There are a total of 453 apartments, which are finished with modern touches and bathed in natural light.





MIXED USE COLLINGWOOD

PROJECT DETAILS

Builder:	Hacer Group
Value:	\$6.1 Million
Completed:	2015

Melbourne is known for fusing modern architecture with its classically built, brick-and-mortar landmarks. Collingwood derives inspiration from the sturdy foundation of the aforementioned structures, and reinforces it with actual pillars and columns of concrete and steel. It retains an aesthetically appealing exterior by resorting to the bright yet neutral colors of beige and orange, and windows which have delicately carved arches looming above them.

Entering a Collingwood building, however, is like being transported into a future where steel, stone, and solid oak have been melded into a harmony which is sadly absent from most commercial and residential complexes. Whether it's the wood floors or carefully orchestrated rooftop gardens, every detail is designed to make people feel at home in this modern environment. The wood and stone negate the lifelessness that is typically conjured by modern architecture and design, while the polished steel and minimalist interior design allows the Collingwood to retain the appearance of a newly built building.





ISTANA APARTMENTS

PROJECT DETAILS

Builder:	Hickory Group
Value:	\$4.4 Million
Completed:	2014

The Istana is a 25-storey residential project that offers one to three bedroom apartments as well as 2-storey luxury penthouses. With 320 units in the building, the property is spread over an estimated 2,700m2 of prime freehold land.



LEICESTER ST. STUDENT ACCOMMODATION

PROJECT DETAILS

Builder:	Icon Co.
Value:	\$5.7M
Start Date:	October 2017

Located in Carlton, Melbourne, the new student accommodation has a site area of 2,040m2. This high-rise building comes with 16 floors and 750 beds for students.



ASI Electrics

33/35 Geddes St
Mulgrave VIC 3170
03 9800 3866

asielectrics.com
info@asielectrics.com

